

PLEXTALK Pocket PTP1 Tutorial - Web Radio Streaming -

Shinano Kenshi Co., Ltd. has the right to change the content on this tutorial without prior notice.

Table of Contents

- 1 What you can do with the Web Radio Streaming function
- 2 Register web radio stations by using your computer
- 3 Configure network setting of your Pocket
- 4 Listen to web radio

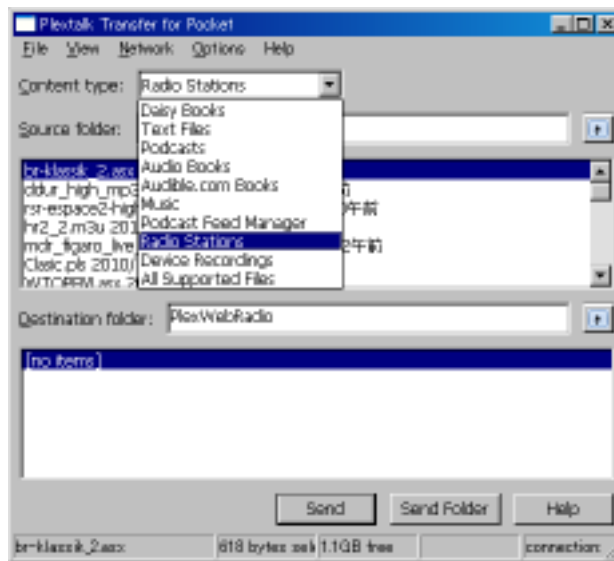
1 What you can do with the Web Radio Streaming function

By using the Web Radio Streaming function, your PLEXTALK Pocket can play streaming of web radio stations on the Internet.

You will need to register web radio stations on an SD card using your computer.

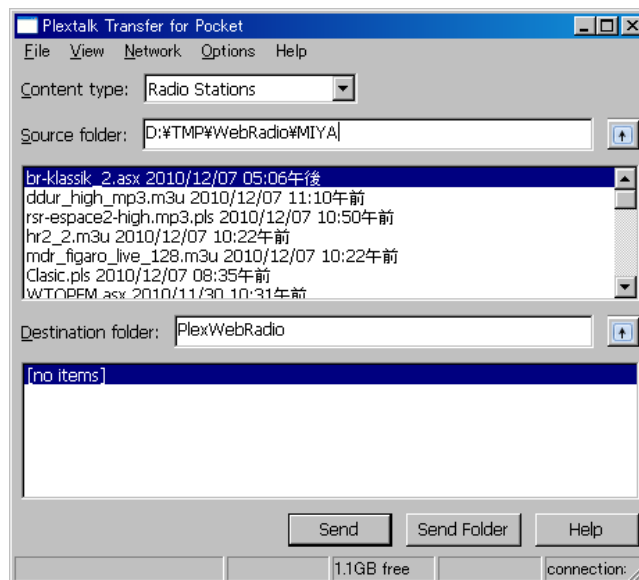
2 Register web radio stations using your computer

- Step 1. Please make sure that your computer is connected to the Internet.
- Step 2. If not already installed, download the 'PLEXTALK Transfer for Pocket' software from the PLEXTALK web site and install it on your computer.
- Step 3. Run the 'PLEXTALK Transfer for Pocket' software.
- Step 4. Download a play list of the web radio station you want to stream on the Internet. For your testing, you can use a sample play list on the PLEXTALK web site. Download <http://www.plextalk.com/in/PlextalkWebRadioTest.pls> and save it on to your computer.
- Step 5. Connect your Pocket to your computer via USB. The 'PLEXTALK Transfer for Pocket' will identify your Pocket.
- Step 6. Select 'Radio Stations' on the 'Content type' drop down box.



Step 7. In the 'Source folder' box, select the folder where you have saved the play list at the Step 4.

Step 8. Select the play list file you have downloaded and saved at the Step 4, and press the 'Send' button. The software will start to transfer the play list to the SD card in your PLEXTALK Pocket.



Step 9. When finishing the transfer, the name of the play list will appear on the 'Destination folder' box.

Step 10. Disconnect your Pocket from your computer. Exit the software.

3 Configure network setting of your Pocket

Note: First you need to obtain the information of your home wireless system or an office wireless system from your IT department. The appendix at the end of this tutorial gives you advice on how to find the information

according to the main Internet providers in the UK.

Step 1. Enable the network device on your Pocket. First press the Menu Key and go to “System settings”- “Network settings”- “Enable or disable network device” option. Select ‘Enable’ by the Right or Left Key and press the Down Key. The menu will automatically close when the network device becomes enabled.

Note: If your Pocket is already configured for your network, it will automatically connect. Skip to section 4.

Step 2. Search available networks around your Pocket. First press the Menu Key and go to “System settings”- “Network settings”- “Wireless network settings” – “Available wireless network” option. When you press the Down Key, your Pocket will start searching.

Step 3. When available networks are listed, select the wireless network you want to connect to. If not configured for your selected network, follow steps 4 and 5.

Step 4. Input network configurations. Your Pocket will ask you for Security mode, Password, Stealth setting, DHCP and IP address, and Proxy server.

Note: You have an option to configure those network settings using the “Network Configuration” tab of the “PLEXTALK Transfer for Pocket” software. For more information, see the ”Help” option of the software.

Security mode:	Select the security mode that is set on the access point of the network.
Password:	Input the password, pass phrase or WEP key that is set on the access point of the network.
Stealth setting:	Select OFF. When your wireless network uses stealth function, select "ON".
DHCP and IP address:	Select ‘Enable’. If the network does not provide DHCP service, select ‘Disable’ and input an IP address information.
Proxy server:	Select ‘Disable’. If the network is using a proxy server, select ‘Enable’ and input information on the proxy server.

Step 5. When all configurations are finished, your Pocket will try to connect to the network.

Step 6. Wait until your Pocket completes the connection. The menu will automatically close when it succeeds.

4 Listen to web radio

- Step 1. Select the web radio station you want to listen to. First press the Title Key and press the Up Key twice to select "category". Go to the 'web radio' category by using the Right or Left Keys. Then press the Down Key twice to select a title. Select the web radio station using the Right or Left Keys and press the Play/Stop Key.
- Step 2. Your Pocket will start streaming the web radio station.

For more information, please see the PLEXTALK Pocket PTP1 User's Guide.

Appendix: Where to find the name of your network (SSID)?

The name of your network (SSID) can be found directly on your computer in the network specifications. Alternatively you can find in the section below how the SSID can be found on material according to different UK providers:

- BT Home Hub
- Sky
- Orange
- Bright Box

BT Home Hub

You can find the name of your network (SSID) and your wireless key on the rear of your BT Home Hub. You can find additional information on finding your SSID and wireless key on the BT Help Pages.

http://bt.custhelp.com/app/answers/detail/a_id/14000/c/346,1887,1889

Sky

You can find the name of your network (SSID) and your network key printed on your router.

This information will be displayed in the following format:

SSID - SKY12345

Network Key - ABCDEFGH

Please note that your Network Key is case sensitive and must be entered in uppercase letters.

Orange

Orange Livebox

You can find information on connecting to your Orange Livebox on the Orange Help & Support Pages.

<http://help.orange.co.uk/orangeuk/support/personal/646925>

Netgear DGN1000

You can find the name of your network (SSID) and your security key printed on the base of your router.

Siemens Gigaset SE572

You can find the name of your network (Product Name / SSID) and your security code printed on the base of your router.

Bright Box

You can find your "wireless password" and your "wireless network name" printed on a sticker on the bottom of your router, and on your 'keep me' card.

End of Tutorial